

Lupa Medical Office Plaza

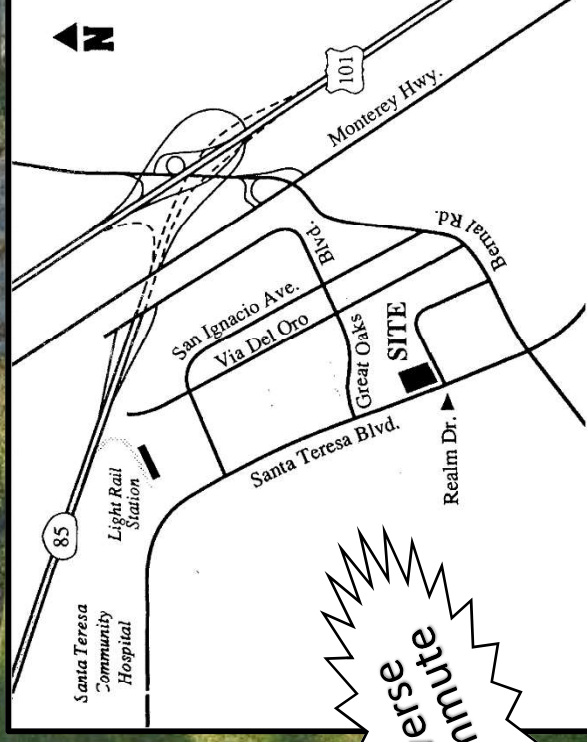
6940 Santa Teresa Blvd, San Jose

FOR LEASE

±1,080 Square Feet

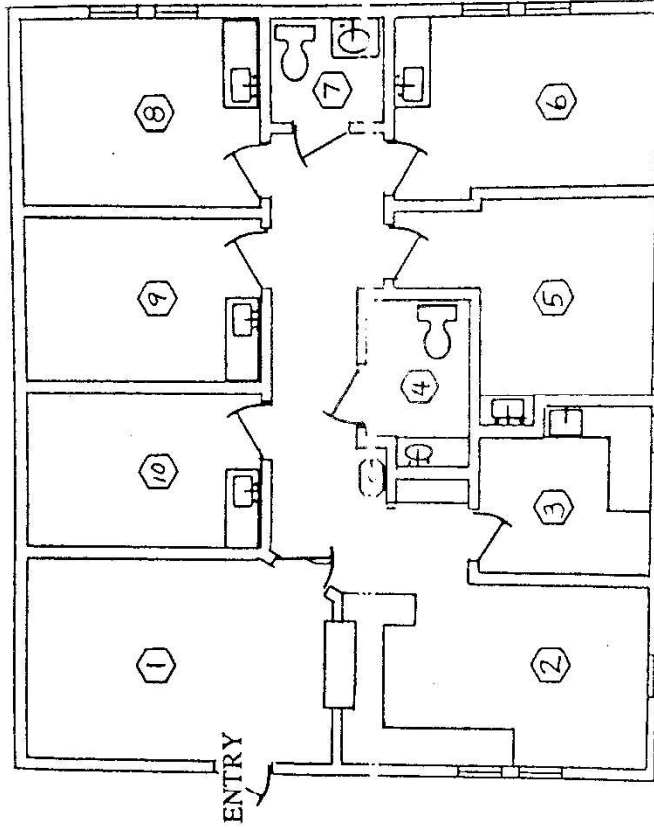
- Basement Storage Available at No Extra Cost
- Close Proximity to Santa Teresa Hospital, Hwys 101 & 85
- Ready to Move In
- Medical or Office Use
- Separately Metered
- Competitive Rent
- Corner Suite with Natural Lighting

LFM Properties
Linda Fox Mighdoll
(408) 379 6730
CA BRE: 00789414

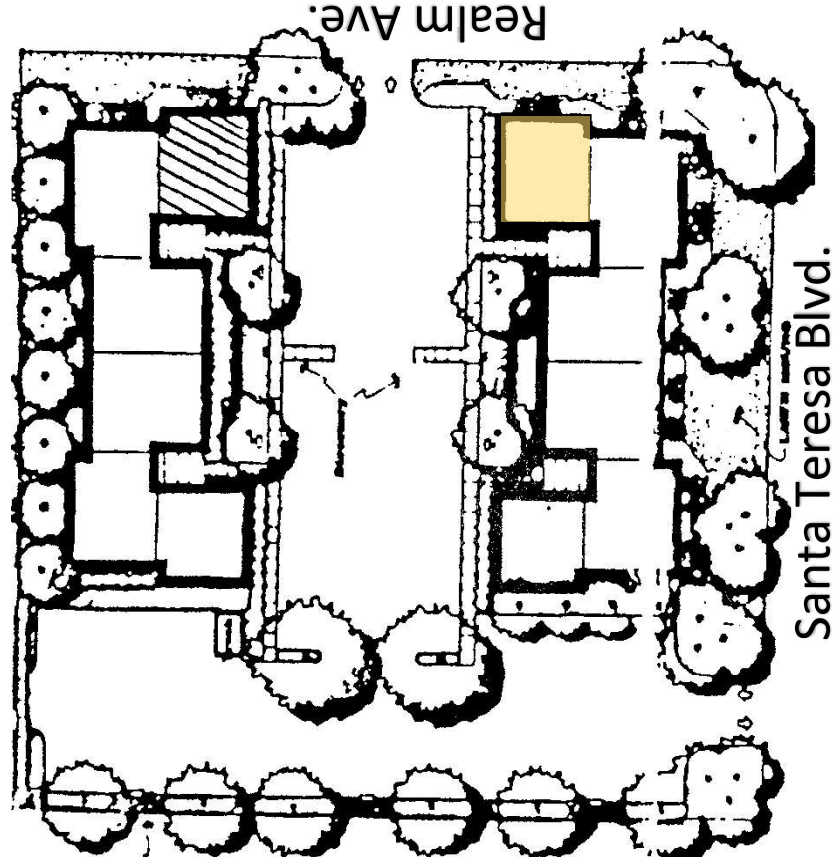


256 E. Hamilton Avenue, Suite M
Campbell, CA 95008

Floor Plan



- 1 Reception Room 9'-9" x 14'-6"
- 2 Business Office 8'-9" x 14'-6"
- 3 Laboratory Room 8'-0" x 8'-0"
- 4 Rest Room 5'-0" x 8'-0"
- 5 Treatment Room 8'-0" x 8'-9"
- 6 Treatment Room 7'-9" x 8'-0"
- 7 Rest Room 5'-0" x 5'-0"
- 8 Private Office 8'-6" x 11'-0"
- 9 Treatment Room 7'-6" x 11'-0"
- 10 Treatment Room 7'-6" x 11'-0"



Santa Teresa Blvd.

Realm Ave.

The information contained herein was obtained from sources believed reliable; however, LFM Properties makes no guarantees, warranties or representations as to the completeness or accuracy thereof. The presentation of this property is submitted subject to errors, omissions, change of price or conditions prior to sale or lease, or withdrawal without notice.